

CLIPSO renovates and decorates the offices of the "Aussie Tours" travel agency

The architecture firm Studiebureau Vangheluwe-lzegem was in charge of the renovation and design project for the Aussie Tours travel agency offices, located in Roulers (Belgium). For this large-scale project, the architecture firm once more renewed its collaboration with MonaVisa, an approved CLIPSO fitter with outstanding creativity and expertise.

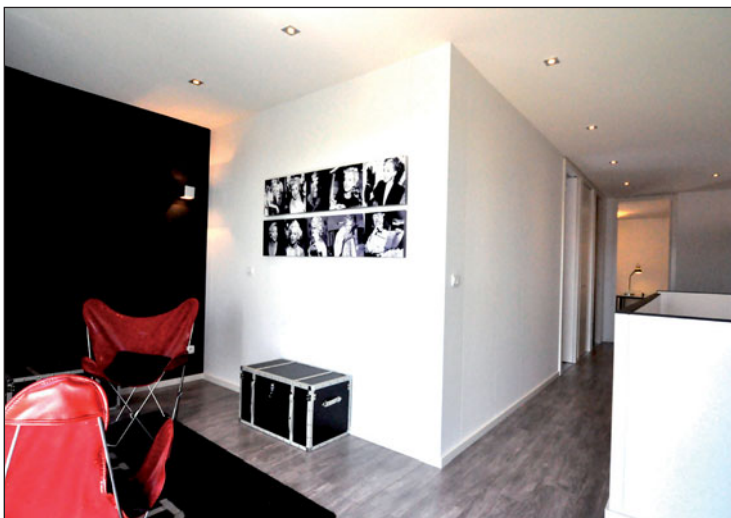
The main objective of this renovation was to optimise the acoustics and to personalise the space in perfect harmony with the architecture of the public-use building. This project required the use of more than 400 m² of acoustic coverings (495 D) and profiles (P-CC) to create a monolithic acoustic ceiling of 40.43 m by 4.60 m and a large-format printed wall covering of 40.43 m by 3.20 m - all fitted in one single piece!

The finished result's appearance exceeds all expectations, according to Mr Steven Vangheluwe, the architect at the head of the project. From an acoustic point of view, the travel agents



work and welcome customers in a comfortable and friendly environment. The interior is conducive to relaxation and well-being, reflecting the philosophy of the "Aussie Tours" travel agency.

The MCP group integrates CLIPSO into its "Modulife" modular constructions



The MCP (Management Corporatif et Participatif) group is a constructor of individual houses and high-quality real estate programmes in the Lyon region (France). CLIPSO stretch walls and ceilings respond perfectly to its constructive system called "Modulife", consisting of modular, sustainable housing constructions with a low environmental impact. As an exclusive partner, CLIPSO has contributed to the growing success of this new concept.

From the open kitchen to the lounge area via the living room, bedrooms, bathroom and hallway, CLIPSO created the wall and ceiling coverings for this BBC show home, with the Effnergie label, built over a period of exactly 5 weeks. The installation, carried out by a team of 3 fitters, took less than a week. With their highly-technical fitting system,

CLIPSO walls and ceilings are adapted to technical constraints, in particular the sizing variations typical of this kind of construction.

Once the works were complete, Mr Bernard Voisin, Research and Development Director for the MCP group, expressed his satisfaction with the services and products provided by CLIPSO. At the official opening in Mâcon (France) last June, CLIPSO ceilings and walls amazed onlookers with their appearance, quick and clean installation, and competitive prices. Due to the success of this first accomplishment, new projects will soon be carried out in partnership with CLIPSO.



CLIPSO is a member of the governing board of the French Fibers Innovative Cluster

With a new president and four new companies on the governing board, the French Fibers Innovative Cluster is growing in power!



Last summer, CLIPSO joined the governing board of the French Fibers Innovative Cluster, along with three other companies, UPM, PLASTIFIBRE and CINE.

The eastern branch of the French Fibers Innovative Cluster, located in Épinal, is an innovation network in "eco-materials, eco-design and green chemistry", and comprises more than 400 members. Since its creation, the Cluster has provided labels for 119 projects, representing a budget of 180 million euros. It has also been involved in various organisations and developmental projects.

For more information, visit: <http://www.polefibres.fr>

CLIPSO coverings are labelled A+ for indoor air quality!

In December 2010, CLIPSO was one of the first companies within the technical coverings industry to obtain A+ labelling (main substances and total emissions) = the best score. All CLIPSO coverings will be labelled A+ from 1 December 2011, in accordance with the French decree no. 2011-321. Our tests are available upon request.

What does the new labelling of construction and decoration products consist of?

The French decree no. 2011-321 requiring the first environmental health labelling for construction and decoration products was signed in May 2011. The objective of this labelling is to allow consumers, from 1 January 2012 onwards, to choose the products which have the lowest possible impact on the indoor air of their home.

What does the official labelling mean?

The labelling will indicate the level of volatile pollutant emissions, on a scale from A+ (very low emissions) to C (high emissions), next to an image of a house containing a cloud of pollutants. Consumers will thus have clear, transparent information which could become a new selection criterion. Consultants (contractors, architects etc.) will also be able to take the air quality into account as a criterion in their calls for tender for the construction or renovation of buildings.

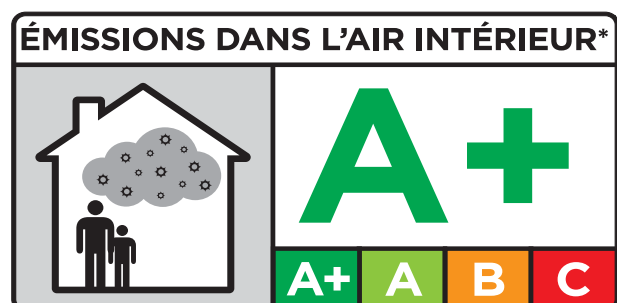
What are the substances affected by the labelling requirement?

The targeted pollutants are those which are most frequently encountered in housing, including formaldehyde, acetaldehyde, toluene, tetrachloroethylene, xylene, trimethylbenzene, dichlorobenzene, ethylbenzene, butoxyethanol and styrene, as well as the total volatile organic compounds (TVOC). The emissions levels are based on the measurements carried out after 28 days in an emissions test chamber or test cell, or before this time limit if the emissions are in line with the requirements of the lowest emissions level (A+).

For more information, visit:

<http://www.legifrance.gouv.fr/rechTexte.do>

<http://www.developpement-durable.gouv.fr/Chapitre-I-Mode-d-emploi-de-l.html>

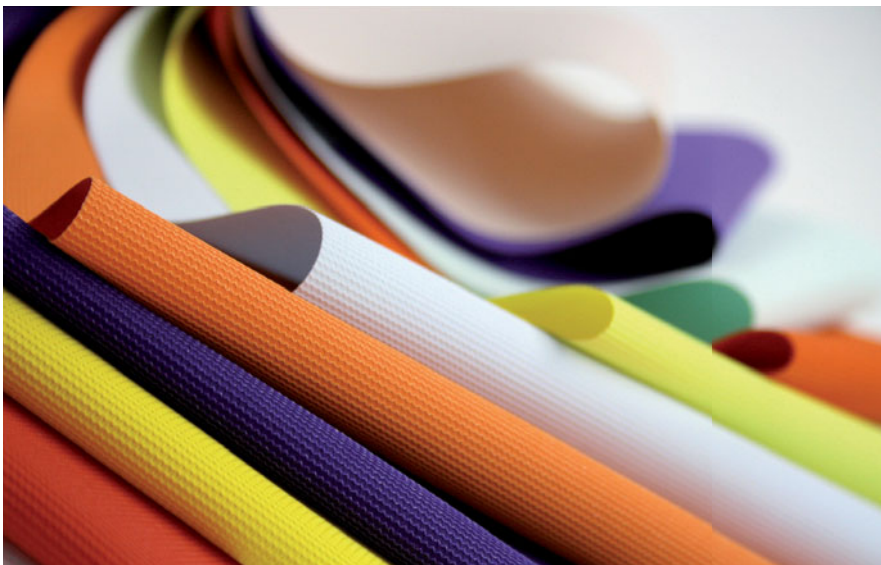


New range of environmentally-friendly CLIPSO coverings

Attentive to markets and trends within the interior decoration sector, the CLIPSO R&D lab is proud to present its new flagship design for the new working year - the new CLIPSO covering collection which is even more environmentally friendly!

Made up of 5 groups of coverings: Standard, Specific, Coloured, Sparkly and Translucent, this new CLIPSO collection is trendy, lively, warm and brightly coloured, allowing you greater choice and creative freedom.

CLIPSO coverings are compliant with new environmental regulations (free from heavy metals, CMR chemicals and VOCs, in accordance with the directives and requirements of the French Agency for Environmental and Occupational Health Safety) and are perfectly suitable for projects based on approaches oriented towards sustainable development.



We are pleased to announce that our new product guide will be available in Autumn 2011. It presents the new collection of CLIPSO coverings along with technical information and samples. It is an indispensable working and marketing tool for all CLIPSO fitters, distributors and consultants.

This new material (ref. C-Nuancier) will replace the old data sheets (ref. C-FTBuild, C-FTR 1, C-FTR 2 and C-FTR 3). CLIPSO will send the new guide to you by post as soon as it is available. A PDF version will also be available to consult and download from our website at www.clipso.com.

Please feel free to contact our sales department at info@clipso.com for any further information.

- **CLIPSO Standards** (Standard) coverings are our classics: high-quality, timeless coverings which adapt easily to all interiors.

- **CLIPSO Spécifiques** (Specific) coverings are practical and designed for specific projects, for example, acoustic, antibacterial, water-repellent and dirt-repellent coverings.

- **CLIPSO Couleurs** (Coloured) coverings offer a wide range of colour schemes for all of your decorative inspirations, with pastels for subtle environments and intense colours for livelier surroundings.

- **CLIPSO Pailletés** (Sparkly) coverings form a new, trendy range of coverings. We love the subtle shimmer of the sequins, which give a chic, glamorous style to your interior design.

- **CLIPSO Translucides** (Translucent) coverings are back-lit, used with different colours, or used with projections to create bright, welcoming and unique atmospheres.

CLIPSO in the press...



The dynamism and products of the CLIPSO group have evoked the interest of the press, both in France and abroad, for example:

- Architetti Lombardi (July)
- Design Home (August)
- Maison Actuelle (September)

You can read and download the press reviews on our website at www.clipso.com.

New communication tools for the CLIPSO network

In this issue, we present new documentation which will be added to the CLIPSO marketing file. They will be available in autumn 2011 in different languages (French, English, German, Spanish, Italian and Russian). They can be sent to you on request, and are also available for download from our website at www.clipso.com.



• **CLIPSO Presentation Brochure** (ref. C-Present): in this updated version you will find out all you need to know about the CLIPSO group, its activities and useful information.

• **Modular Construction Brochure** (ref. C-Construmod): an indispensable marketing tool for canvassing the new market of constructors of modular, traditional or prefabricated housing, apartment blocks, offices etc.

• **Covering guide** (ref. C-Nuancier): this guide, a useful tool, has been created in the form of a triptych. It aims to combine the complete range of CLIPSO coverings with their technical details and samples, all in one place.

CLIPSO will attend the BATIMAT trade fair in Paris from 7 to 12 November 2011



CLIPSO is pleased to announce it will attend the BATIMAT trade fair, which will take place from 7 to 12 November in Paris, at the Porte de Versailles. At this event, CLIPSO welcomes you to its stand, no. 23, Aisle M, Hall 7.2 to show you its products and give you a sneak preview of its latest creations. The CLIPSO stand will focus on innovation and ecology. Invitations will be sent upon request to the following e-mail address: info@clipso.com by 31 October at the latest.

The BATIMAT trade fair is one of the largest international events within the building sector, each year gathering together more than 2,382 exhibitors from 55 countries, and 380,168 visitors from 171 countries. In 2011, the fair reaches its 28th year, and will focus on the topical issue of energy efficiency of buildings.

